

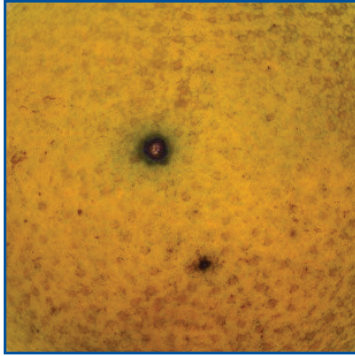
Packinghouse Citrus Black Spot ID¹

Identificación de la Mancha Negra de los Cítricos en las Plantas de Procesamiento

Mark A. Ritenour, Megan M. Dewdney, Natalia A. Peres, and Jamie D. Burrow²

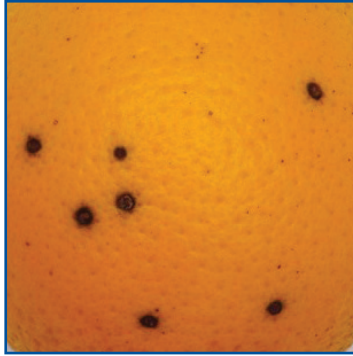
Citrus black spot symptoms have many forms, such as hard spot, cracked spot, false melanose, and virulent spot.

La mancha negra de los cítricos presenta muchos tipos de síntomas tales como, manchas o puntos duros, manchas o puntos agrietados, manchas o puntos de falsa melanosis y manchas o puntos virulentos.



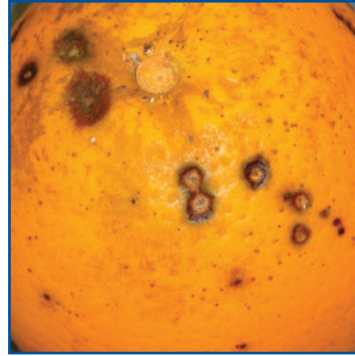
Hard Spot

Manchas o puntos duros



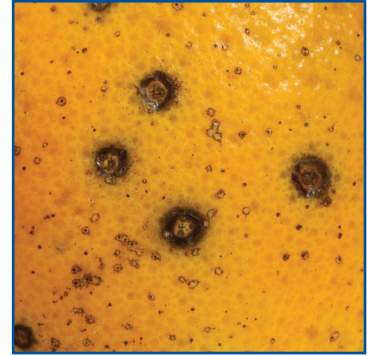
Hard Spot

Manchas o puntos duros



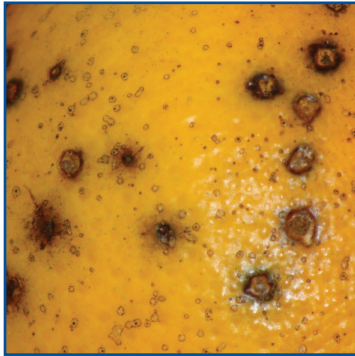
Hard Spot

Manchas o puntos duros



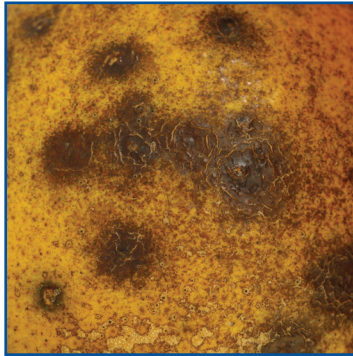
Hard Spot

Manchas o puntos duros



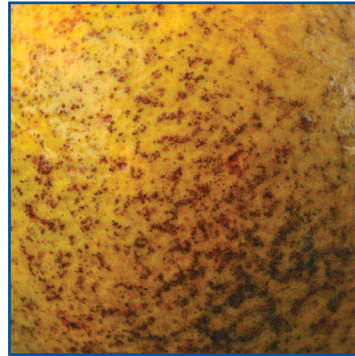
Hard Spot

Manchas o puntos duros



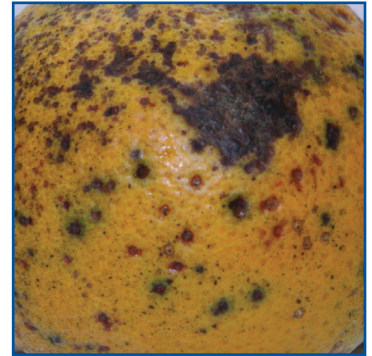
Cracked Spot

Manchas o puntos agrietados



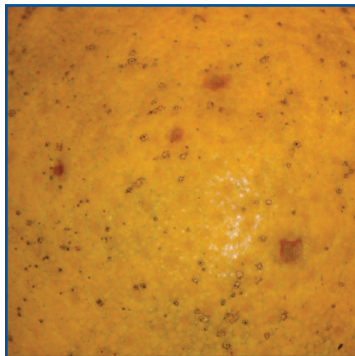
False Melanose

Falsa Melanosis



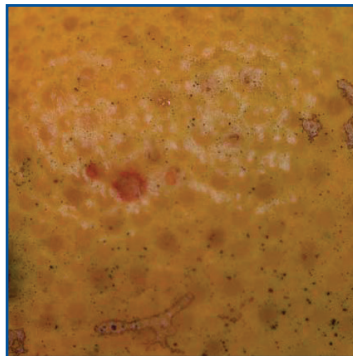
Virulent Spot

Mancha Virulenta



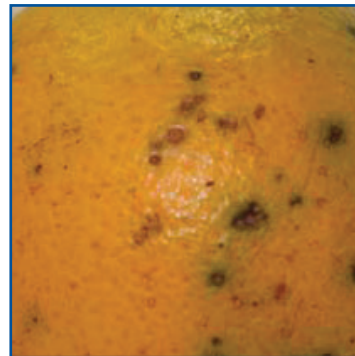
**Early Virulent Spot
(freckle spot)**

Mancha virulenta temprana
(mancha peca)



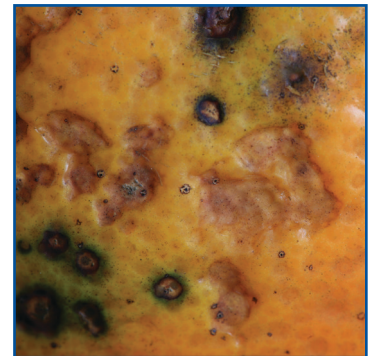
**Early Virulent Spot
(freckle spot)**

Mancha virulenta temprana
(mancha peca)



**Early Virulent Spot
(freckle spot)**

Mancha virulenta temprana
(mancha peca)



**Early Virulent Spot
(freckle spot)**

Mancha virulenta temprana
(mancha peca)

1. This document is HS1184, one of a series of the Horticultural Sciences Department, UF/IFAS Extension. Original publication date August 2010. Revised January 2015, May 2018, and September 2023. Visit the EDIS website at <http://edis.ifas.ufl.edu>.

2. Mark A. Ritenour, associate professor, Department of Horticultural Science, UF/IFAS Indian River Research and Education Center; Megan M. Dewdney, associate professor, Department of Plant Pathology, UF/IFAS Citrus REC; Natalia A. Peres, professor, Department of Plant Pathology, UF/IFAS Gulf Coast REC; and Jamie D. Burrow, Extension program manager, UF/IFAS CREC; UF/IFAS Extension, Gainesville, FL 32611.

The Institute of Food and Agricultural Sciences (IFAS) is an Equal Opportunity Institution authorized to provide research, educational information and other services only to individuals and institutions that function with non-discrimination with respect to race, creed, color, religion, age, disability, sex, sexual orientation, marital status, national origin, political opinions or affiliations. For more information on obtaining other UF/IFAS Extension publications, contact your county's UF/IFAS Extension office. U.S. Department of Agriculture, UF/IFAS Extension Service, University of Florida, IFAS, Florida A & M University Cooperative Extension Program, and Boards of County Commissioners Cooperating. Andra Johnson, dean for UF/IFAS Extension.