

Southern House Spider, *Kukulcania hibernalis* (Hentz) (Arachnida: Araneae: Filistatidae)¹

Glavis B. Edwards and K. McCanless²

The Featured Creatures collection provides in-depth profiles of insects, nematodes, arachnids and other organisms relevant to Florida. These profiles are intended for the use of interested laypersons with some knowledge of biology as well as academic audiences.

Introduction

The southern house spider (Figures 1–5), *Kukulcania hibernalis* (Hentz 1842), is a conspicuous arachnid in Florida due to its relatively large size and distinctive flat, tangled web. It is common throughout Florida and much of the southern United States in human populated areas. As a group, filistatid spiders are known as crevice spiders, and this species is sometimes referred to as the southern crevice spider. Males of this species are often mistaken for the notorious [brown recluse spider](#), *Loxosceles reclusa* Gertsch and Mulaik, because of their color and general shape. Southern house spiders are not known to have a dangerous bite. However, two bite cases reportedly caused the victims pain and swelling for up to two days.

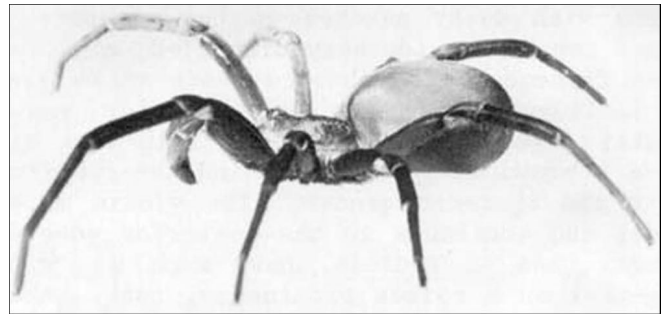


Figure 2. Lateral view of female southern house spider, *Kukulcania hibernalis* Hentz.

Credit: G. B. Edwards, Division of Plant Industry

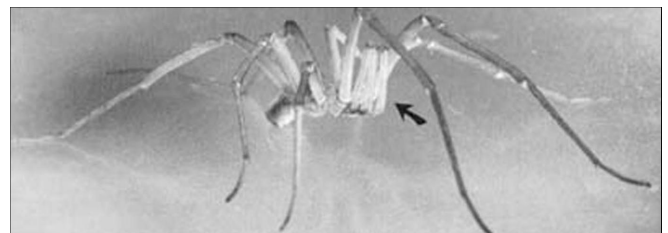


Figure 3. Lateral view of male southern house spider, *Kukulcania hibernalis* Hentz, showing elongated palpi (arrow).

Credit: G. B. Edwards, Division of Plant Industry



Figure 1. Southern house spider, *Kukulcania hibernalis* Hentz.

Credit: Edward L. Manigault, Clemson University;
www.insectimages.org



Figure 4. Dorsal view of male southern house spider, *Kukulcania hibernalis* Hentz.

Credit: Jeffrey Lotz, Division of Plant Industry



Figure 5. Female brown recluse spider, *Loxosceles reclusa* Gertsch and Mulaik, dorsal view for comparison with dorsal view of male southern house spider, *Kukulcania hibernalis* Hentz.

Credit: Jeffrey Lotz, Division of Plant Industry

Systematics

The southern house spider was described in the genus *Filistata* but was later placed in the genus *Kukulcania* (Lehtinen 1967). The Filistatidae are related to a group of primitive Araneomorphae that collectively are known as Haplogynae. This group includes other spiders sometimes prone to occur in houses, such as the cellar spiders (Pholcidae), spitting spiders (Scytodidae), and the brown recluses and relatives (Sicariidae).

Description

Kukulcania hibernalis is a species that exhibits a great degree of sexual dimorphism. Females are charcoal gray and 13–19 mm (1/2–3/4 in) in length. Females often have dusky patches on the carapace. The abdomen is elongate-ovoid, and at times can be considerably distended, e.g., after feeding or if the female is gravid. The male spider is 9–10 mm in length, khaki to amber in color, and has long slender legs and palpi (the distal segments of the latter fold back along the proximal segments). Males also have a brown stripe from behind the eye prominence, which narrows quickly to include only the thoracic groove. The violin mark of the brown recluse is conspicuously wider and continues to the posterior edge of the carapace. Also, male *K. hibernalis* are generally larger than *L. reclusa*, have much longer legs and palpi, and have eight eyes grouped together on a raised prominence, rather than the six eyes in three pairs possessed by *L. reclusa*.

Spiders in the family Filistatidae have structures called a cribellum (a silk-producing plate found anterior to the spinnerets) and a calamistrum (a row of specialized setae on the 4th metatarsus used for pulling silk from the cribellum). The silk has properties similar to velcro, in that

it readily adheres to projections on other arthropods such as claws, setae, spines, and textured integument. When spun into sheets, it is an effective trap for insect prey. The male has these structures reduced or absent, as it does not make a web in the adult stage.

Habits and Habitats

The southern house spider is partial to spaces within the masonry of buildings, especially dark recesses of windowsills, shutters, and overhangs. Females and juveniles make specialized webs (Figure 6) that are occasionally found under tree bark but are frequently seen on houses, barns, bridges, and other man-made structures. Here a spider seeks out a sheltered crevice for a nest, around which a distinctive web is made on the adjoining substrate. Under microscopic inspection, the silk of this web appears to be "woolly," an appearance created by the action of the calamistrum pulling silk from the cribellum. This web lacks sticky droplets that are characteristic of entrapment strands in webs of some other spider families. Rather, with *K. hibernalis*, the structure of the web itself is responsible for entangling prey. Males do not build webs but instead wander in search of females in order to mate. Females lay about 200 eggs that are loosely swathed in a silken ball about 15 mm in diameter and are kept with the female in her nest. In Florida, all stages of development seem to be present throughout the year. Females may live up to eight years (Kaston 1972).

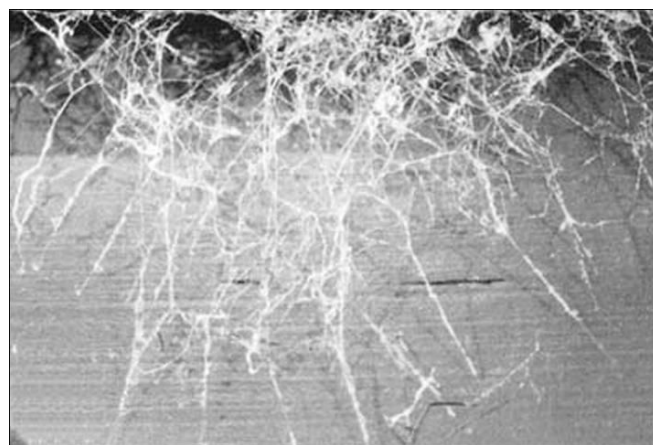


Figure 6. Web of the southern house spider, *Kukulcania hibernalis* Hentz.

Credit: G. B. Edwards, Division of Plant Industry

These spiders are generally found within their distinctive tangled web. During the day, they generally hide in the crevice from which the web emerges, but at night, they will come out and sit on the web. The webs have a decidedly unkempt appearance with debris and body parts of insect prey they have devoured. Small immatures can make webs in the crease between two adjoining surfaces, such as wall and ceiling, but larger individuals seem to need a more substantial shelter where they can retreat, hence their

preference for holes and in crevices between boards or under fixed objects.

Although the webs tend to accumulate debris and may be unsightly to some, this harmless spider is beneficial and captures many pest insects, including house flies, horse flies, mud daubers, cockroaches, and May beetles.

Survey and Detection

The distinctive tangled, unkempt web easily identifies the presence of this spider. The eye protuberance, size, and color of both sexes, and the long legs and palpi of the males aid in field identification. Wandering males are easily captured in shell vials; females must usually be trapped outside the nest on the web.

Management

Spiders are often in or around buildings because they prey on insects that are attracted to the lights. To prevent indoor spider infestations, cracks and crevices in window casings should be repaired, and spaces above and below doors should be sealed. Holes at entry points of water pipes and electrical lines should be plugged and screens should be kept securely on chimneys. The use of window and door screens (or repairing damaged screens) can also help reduce insect and subsequent spider invasions into the residence.

Routine vacuuming can eliminate spiders over time by removing the food source. Periodic vacuuming along baseboards, under furniture, or other undisturbed areas near the floor of the home will remove webs, nests, and egg sacs. Firewood should be inspected for spiders or egg sacs before being brought into the house. In rare instances where spiders are numerous and constantly entering the house, you may wish to use an insecticide. These materials are best applied only where spiders are present.

[Insect Management Guide for Spiders](#)

Selected References

- Hentz NM. 1842. Descriptions and figures of the Araneides of the United States. *Boston Journal of Natural History* 4:223-231.
- Kaston BJ. 1972. *How to know the spiders*, 3rd edition. Wm. C. Brown Co., Dubuque, Iowa. 272p.
- Lehtinen PT. 1967. Classification of the cribellate spiders and some allied families, with notes on the evolution of the suborder Araneomorpha. *Ann. Zool. Fenn.* 4:199-468.
- Levi HW. 1982. Araneae. Pp. 77-95 in S.P. Parker, ed. *Synopsis and Classification of Living Organisms*, Vol. 2. McGraw-Hill Book Co., New York.

¹ This document is EENY144, one of a series of the Department of Entomology and Nematology, UF/IFAS Extension. Original publication date July 2000. Revised December 2012, July 2022, and December 2025. Visit the Ask IFAS website at <https://ask.ifas.ufl.edu/> for the currently supported version of this publication.

² Glavis B. Edwards, emeritus curator, Florida Department of Agriculture and Consumer Services, Division of Plant Industry; K. McCanless; UF/IFAS Extension, Gainesville, FL 32611.

The Institute of Food and Agricultural Sciences (IFAS) is an Equal Opportunity Institution authorized to provide research, educational information and other services only to individuals and institutions that function with non-discrimination with respect to race, creed, color, religion, age, disability, sex, sexual orientation, marital status, national origin, political opinions or affiliations. For more information on obtaining other UF/IFAS Extension publications, contact your county's UF/IFAS Extension office. U.S. Department of Agriculture, UF/IFAS Extension Service, University of Florida, IFAS, Florida A & M University Cooperative Extension Program, and Boards of County Commissioners Cooperating. Andra Johnson, dean for UF/IFAS Extension.