

Common Blossom Thrips, *Frankliniella schultzei* Trybom (Insecta: Thysanoptera: Thripidae)¹

Garima Kakkar, Dakshina R. Seal, and Vivek Kumar ²

Introduction

Florida is home to a large number of invasive as well as native species of thrips. Hot temperatures and high humidity are important factors supporting huge populations of thrips in Florida. In the genus *Frankliniella*, the common blossom thrips, *F. schultzei* Trybom, is a relatively new vegetable pest in south Florida. It is a key pest in tomato and cucumber fields in South America.



Figure 1. Dorsal view of an adult common blossom thrips, *Frankliniella schultzei* Trybom. Photograph by: Vivek Kumar, University of Florida

Synonymy

In Australia, *F. schultzei* was earlier known as *F. lycopersici* Steele, while in South America it was described as *F. paucispinosa* Moulton (Sakimura 1969).

Other synonymies of *F. schultzei* include:

- *F. interocellaris* Karny
- *F. sulphurea* Schmutz
- *F. delicatula* Bagnall
- *F. dampfi* Priesner (1923)
- *F. dampfi interocellularis* Karny (1925)
- *F. lycopersici* Andrewartha (1937)
- *Parafrankliniella nigripes* Firault (1928)
- *F. paucispinosa* Moulton (1933)
- *F. sulphurea* Schmutz (1913)
- *Physopus schultzei* Trybom (1910)
- *Euthrips gossypii* Shiraki (1912)
- *F. delicatula* Bagnall (1919)
- *F. trybomi* Karny (1920)
- *F. persetosa* Karny (1922)
- *F. tabacicola* Karny (1925)
- *F. africana* Bagnall (1926)
- *F. agnlicana* Bagnall (1926)
- *F. aeschlyi* Girault (1927)
- *F. kellyana* Kelly & Mayne (1934)

1. This document is EENY 477, one of a series of the Department of Entomology and Nematology, UF/IFAS Extension. Original publication date July 2010. Revised July 2017. Visit the EDIS website at <http://edis.ifas.ufl.edu>. This document is also available on the Featured Creatures website at <http://entnemdept.ifas.ufl.edu/creatures/>.

2. Garima Kakkar, fruit and alternative crops agent, UF/IFAS Extension St. Lucie County; Dakshina R. Seal, associate scientist, Department of Entomology and Nematology; and Vivek Kumar Jha, assistant scientist, Department of Entomology and Nematology, UF/IFAS Tropical Research and Education Center; UF/IFAS Extension Gainesville, FL 32611.

- *F. dampfi nana* Priesner (1936)
- *F. favoniana* Priesner (1938)
- *F. pembertoni* Moulton (1940)
- *F. clitoriae* Moulton (1940)
- *F. schultzei nigra* Moulton (1948)
- *F. ipomoeae* Moulton (1948)
- *F. insularis* (Franklin) Morison (1930)

Distribution

The common blossom thrips has a very wide distribution and is mainly found in tropical and subtropical areas throughout the world (Vierbergen and Mantel 1991).

Reported worldwide distribution is as follows:

- **Africa:** Angola, Botswana, Cape Verde, Chad, Congo, Egypt, Ethiopia, Gambia, Ghana, Kenya, Libya, Madagascar, Mauritius, Morocco, Namibia, Niger, Somalia, South Africa, Sudan, Uganda, Zimbabwe
- **Asia:** Bangladesh, India, Indonesia, Iran, Iraq, Israel, Java, Malaysia, Pakistan, Sri Lanka
- **Australia and South Pacific:** Australia (New South Wales, Northern Territory, Queensland, South Australia, Victoria, Western Australia), French Polynesia, Papua New Guinea
- **Central America and Caribbean:** Barbados, British Virgin Islands, Cuba, Dominican Republic, Haiti, Jamaica, Puerto Rico
- **Europe:** Belgium, mainland Spain, Netherlands, Spain, United Kingdom
- **North America:** United States (central and southern Florida, Colorado, Hawaii)
- **South America:** Argentina (Rio de Janeiro), Brazil (Minas Gerais, Parana, Rio Grande do Norte, Santa Catarina, Sao Paulo), Colombia, Chile, Guyana, Paraguay, Peru, Uruguay, Venezuela

Description

Frankliniella schultzei manifest two different color morphs, a dark and a pale form (Sakimura 1969). The two forms are anatomically similar to each other (Mound 1968). Sakimura (1969) reported the varied distribution of the two color morphs across the globe:

The dark form is mainly distributed:

- south of the Sudan to the Cape in Africa,

- from the Philippines to the south shore of Australia in western Pacific region,
- from the Caribbean to the south of Argentina in South America,
- Florida and Colorado in North America,
- The Netherlands in Europe, and
- throughout India in Asia.

The light form exists in:

- Egypt, Sudan, Uganda, and Kenya in Africa,
- Hawaii in North America,
- India, and
- New Guinea in the western Pacific region.

Mixed colonies of both color forms are reported by Mound (1968) in Egypt, India, Kenya, Puerto Rico, Sudan, Uganda, and New Guinea.

Thrips are very small insects. Adult females are 1.1-1.5 mm long, whereas adult males are 1.0-1.6 mm in length. Thrips species usually are identified by body color, body setae, and a comb on the 8th abdominal segment. The following text and images describe identifying characteristics of *F. schultzei*.

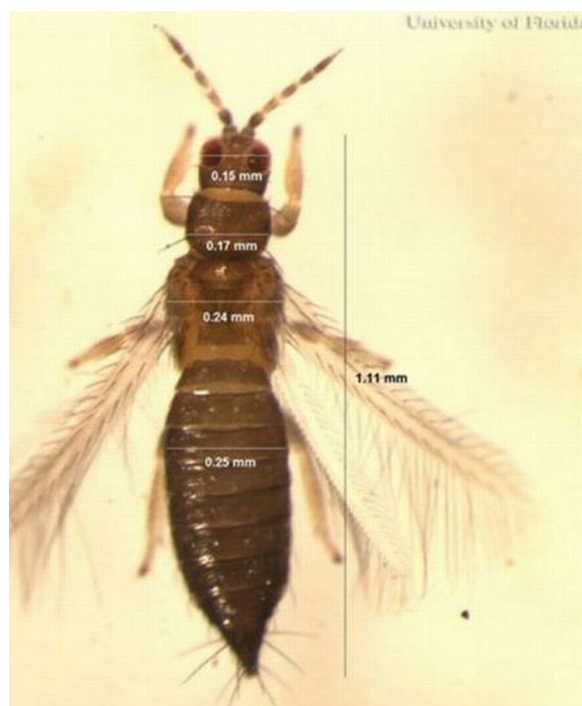


Figure 2. Dorsal view of an adult common blossom thrips, *Frankliniella schultzei* Trybom, with dimensions marked. Photograph by: Vivek Kumar, University of Florida

The interocellar setae arise along an imaginary line across the front edges of the two hind ocelli.

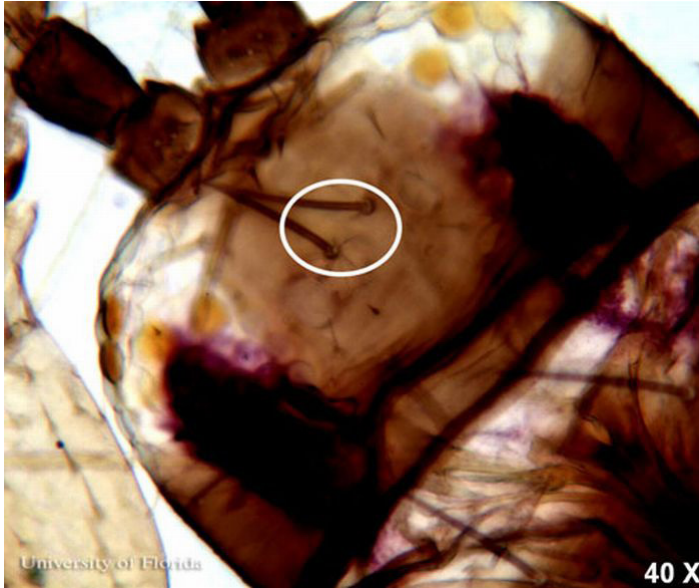


Figure 3. Head of an adult common blossom thrips, *Frankliniella schultzei* Trybom, showing interocellar setae at 40 X magnification. Photograph by: Garima Kakkar, University of Florida

The postocular setae are slightly shorter than interocellar setae on the head of adult female *F. schultzei*.

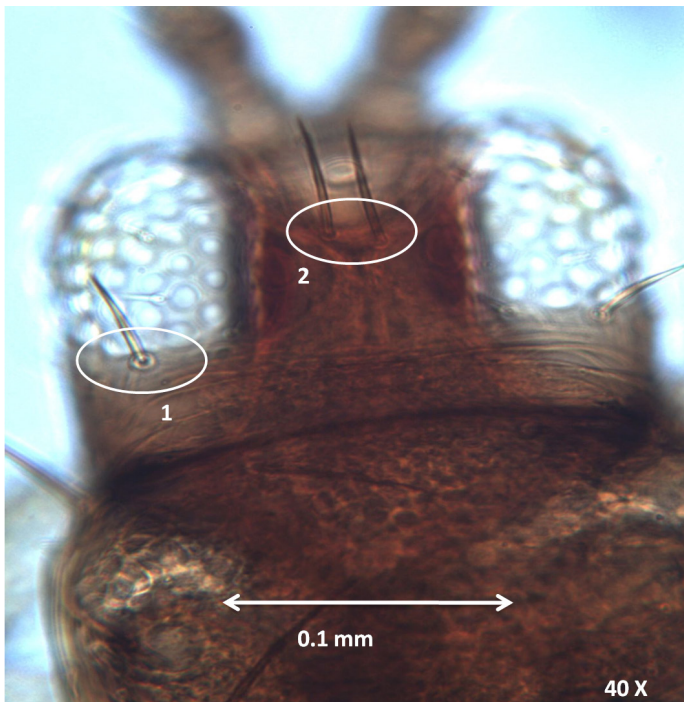


Figure 4. Head of an adult common blossom thrips, *Frankliniella schultzei* Trybom, showing postocular setae (1) smaller than interocellar setae (2) at 40 X magnification. Credits: Vivek Kumar, University of Florida

The anteromarginal setae are slightly shorter than anteroangular setae on the anterior of the prothorax.

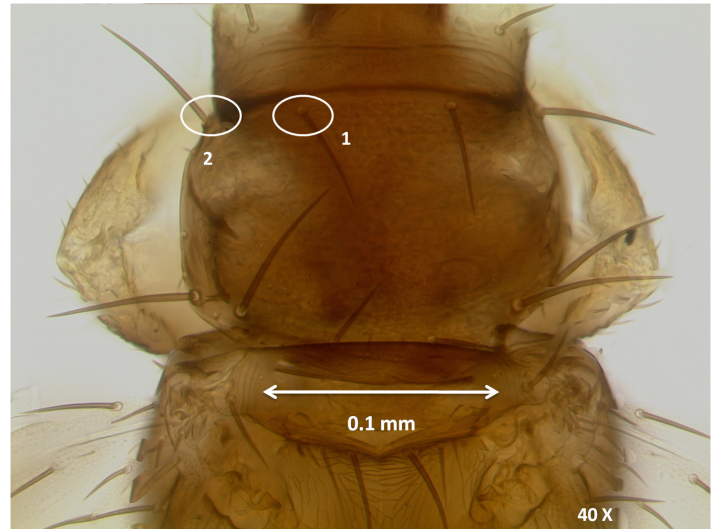


Figure 5. Prothorax of an adult common blossom thrips, *Frankliniella schultzei* Trybom, showing the anteromarginal setae (1) slightly shorter than anteroangular setae (2) on the anterior of the prothorax. Credits: Garima Kakkar, University of Florida

The abdominal comb is weakly developed on the 8th abdominal segment.



Figure 6. Abdomen of an adult common blossom thrips, *Frankliniella schultzei* Trybom, showing a weakly developed comb on the eighth abdominal segment at 40 X magnification. Credits: Garima Kakkar, University of Florida

THRIPS: A Knowledgebase of Vegetable Thrips, developed by Glades Crop Care and the University of Florida, includes a graphical identification key for a number of thrips species, including *F. schultzei*, and is available online at <http://www.gladescropecare.com/resources/thrips-knowledgebase> [19 October 2012] (Frantz and Fasulo 1997).

Life Cycle

There are two larval instars and two inactive and non-feeding stages in the life cycle. The latter two stages are known as prepupa and pupa. Females of *F. schultzei* insert their eggs in flower tissue. Silvia et al. (1998) in Brazil studied this thrips life cycle at 24.5°C and reported that a complete generation takes around 12.6 days. The embryonic stage lasts for four days and the 1st and 2nd larval instars, prepupa and pupa take an average of 2.5, 2.5, 1.2, and 2.1 days respectively. The adult female and male longevity is approximately 13 days.

Hosts

Frankliniella schultzei is a polyphagous pest feeding on various ornamental and vegetable hosts in different parts of the world (Milne et al. 1996). It has been recorded from 83 species of plants among 35 families (Palmer 1990). The major hosts of *F. schultzei* are cotton, groundnut, beans, and pigeon pea.

However, due to its polyphagous feeding behavior, *F. schultzei* also attacks tomato, sweet potato, coffee, sorghum, chillies, onion, and sunflower (Hill 1975).

Economic Importance

Crops suffering economic damage due to *F. schultzei* in different parts of the world include tomato, tobacco, cotton, grain legumes, groundnuts, and lettuce in India; lady's fingers, thistle, Japanese daisies, irises, spinach, tomato, carnation, pumpkin, carola (*Tagetes erecta*), aubergine, and kidney beans in Cuba; *Allium* sp. (cepa) flowers in The Netherlands; and cotton, tomato, lettuce, pepper, cucumber, and tobacco in Brazil.

Frankliniella schultzei can cause both direct and indirect damages to crops. Both adults and nymphs feed on pollen and floral tissue, leading to flower abortion. Severe infestations can cause discoloration and stunted growth of the plant (Amin & Palmer 1985). However, indirect damage by *F. schultzei* is due to the virus transmission.

Tomato spotted wilt virus (*Tospovirus*) is a serious virus causing damage to a wide range of plant species (Prins and Goldbach 1998). The tospoviruses can only be transmitted by thrips and in Florida, four species in the genus *Frankliniella* are responsible for the transmission of tomato spotted wilt virus (TSWV). These are *F. bispinosa*, *F. fusca* (Hinds), *F. occidentalis*, and *F. schultzei* (Mound 2004).

The dark form of *F. schultzei* is known to vector at least four tospoviruses: TSWV (Sakimura 1969, Wijkamp et al. 1995) causing damage to tomato crops in Brazil (Monteiro et al. 2001) and in Paraguay (Ishijima 2002); tomato chlorotic spot virus (TCSV); groundnut ringspot virus (GRSV) (Wijkamp et al. 1995) affecting several crops in Africa (Nakahara 1997); and chrysanthemum stem necrosis virus (Nagata and de Avila 2000). However, the pale form of



Figure 7. Cucumber flower showing decoloration due to feeding by adult common blossom thrips, *Frankliniella schultzei* Trybom. Photograph by: Vivek Kumar, University of Florida



Figure 8. Distorted cucumber fruits due to feeding by the common blossom thrips, *Frankliniella schultzei* Trybom. Photograph by: Garima Kakkar, University of Florida

F. schultzei is reported to be a weak vector of TSWV and TCSV and a non-vector of GRSV (Sakimura 1969, Cho et al. 1988). Recently in Florida, a new incidence of TCSV on tomatoes has been recorded and its spread has been associated with *F. schultzei* (Londoño et al. 2012).

Management

Sampling. *Frankliniella schultzei* is an anthophilous thrips species and is frequently found feeding on the flowers of its

host plant (Kakkar et al. 2012). Like other thrips, *F. schultzei* can also be sampled using colored sticky traps. A study done in Australia reported sexual discrepancies among *F. schultzei* in color preference. In that study, male thrips were most attracted to yellow sticky traps while female thrips were more attracted to pink sticky traps (Yaku et al. 2007).

Biological control. Two generalist predatory mites, *Amblyseius cucumeris* Oudemans and *A. swirskii* Athias-Henriot, known for their potential in controlling soft-bodied insect pests including thrips were tested against *F. schultzei*. The two mites fed voraciously in Petri dishes under laboratory and were found to have potential in suppressing *F. schultzei*. When tested in shadehouse and field conditions, the two mites spp. failed to control *F. schultzei* in the presence of other thrips inhabiting cucumber leaves. It is assumed that the two mites could be effective in controlling *F. schultzei* in single pest situations (Kakkar et al. 2016).

Selected References

- Amin PW, Palmer JM. 1985. Identification of groundnut Thysanoptera. *Tropical Pest Management* 31: 268-291.
- Cho JJ, Mau RFL, Hamasaki RT, Gonsalves D. 1988. Detection of tomato spotted wilt virus in individual thrips by enzyme-linked immunosorbent assay. *Phytopathology* 78: 1348-1352.
- Frantz G, Fasulo TR. (1997). THRIPS: A Knowledgebase of Vegetable Thrips. *Glades Crop Care*. <http://www.gladescrop-care.com/resources/thrips-knowledgebase> (4 September 2012).
- Hill DS. 1975. *Agricultural Insect Pest of the Tropics and Their Control*, Cambridge University Press, London.
- Ishijima, T. (ed.). 2002. *Manual de técnicas de cultivo de hortalizas de fruta (tomate, melón, frutilla*. National Institute of Agriculture, Caacupé, Paraguay. 240 pp.
- Kakkar G, Seal DR, Kumar V. 2012. Assessing abundance and distribution of an invasive thrips *Frankliniella schultzei* (Thysanoptera: Thripidae) in South Florida. *Bulletin of Entomological Research*.102: 249-259.
- Kakkar G, Kumar V, Seal DR, Liburd OE, Stansly PA. 2016. Predation by *Neoseiulus cucumeris* and *Amblyseius swirskii* on *Thrips palmi* and *Frankliniella schultzei* on cucumber. *Biological Control*. 92: 85-91.
- Londoño A, Capobianco H, Zhang S, Polston JE. 2012. First record of Tomato Chlorotic Spot Virus in the USA. *Tropical Plant Pathology*. 37 (5)-333-338.
- Milne JR, Jhumlekhasing M, Walter GH. 1996. Understanding host plant relationships of polyphagous flower thrips, a case study of *Frankliniella schultzei* (Trybom). In Goodwin S, Gillespie P. (eds), *Proceedings of the 1995 Australia and New Zealand Thrips Workshop: Methods, Biology, Ecology and Management*, NSW Agriculture, Gosford. 8-14.
- Monteiro RC, Mound LA and Zucchi RA. 2001. Espécies de *Frankliniella* (Thysanoptera: Thripidae) de importância agrícola no Brasil. *Neotropical Entomology* 1: 65-71.
- Mound LA. 1968. A review of R.S. Bagnall's Thysanoptera collections. *Bulletin of the British Museum (Natural History) Entomology. Supplement*. 11: 1-181.
- Mound LA. 2004. Australian Thysanoptera - biological diversity and a diversity of studies. *Australian Journal of Entomology* 43: 248-257.
- Nagata T, De Avila AC. 2000. Transmission of chrysanthemum stem necrosis virus, a recently discovered tospovirus, by thrips species. *Journal of Phytopathology* 148: 123-125.
- Nakahara S. 1997. Annotated list of the *Frankliniella* species of the world (Thysanoptera: Thripidae). *Contributions on Entomology, International* 2: 355-389.
- Palmer JM. 1990. Identification of the common thrips of tropical Africa (Thysanoptera: Insecta). *Tropical Pest Management* 36: 27-49.
- Prins M, Goldbach R. 1998. The emerging problem of tospovirus infection and nonconventional methods of control. *Trends in Microbiology* 6: 31-35.
- Sakimura K. 1969. A comment on the color forms of *Frankliniella schultzei* (Thysanoptera: Thripidae) in relation to transmission of the tomato-spotted wilt virus. *Pacific Insects* 11: 761-762.
- Vierbergen G, Mantel WP. 1991. Contribution to the knowledge of *Frankliniella schultzei* (Thysanoptera: Thripidae). *Entomologische Berichten (Amsterdam)* 51: 7-12.
- Wijkamp I, Almarza N, Goldbach R, Peters D. 1995. Distinct levels of specificity in thrips transmission of tospoviruses. *Phytopathology* 85: 1069-1074.
- Yaku A, Walter GH, Najar-Rodriguez AJ. 2007. Thrips see red - flower colour and the host relationships of a polyphagous anthophilic thrips. *Ecological Entomology* 32: 527-535.