

Stem and Fruit Canker of Dragon Fruit in South Florida¹

Cheng-Fang Hong, Shouan Zhang, Pamela Suellen Salvador Dutra, Romina Gazis, Jonathan H. Crane, and Jeff Wasielewski²

Introduction

Dragon fruit, also known as pitahaya, pitaya, and strawberry pear, is a group of vine-like, climbing cacti originating from Mexico and Central and South America. Dragon fruit has been introduced and cultivated in Vietnam for more than 120 years. Between the 1990s and 2000s, dragon fruit was introduced into other Asian countries, the Middle East, Australia, and the United States as an exotic fruit crop (Figure 1). The short time period from planting to first harvest (= 2 years), relatively low maintenance required, high nutrient value of the fruit, and increasing demand in the market have made dragon fruit a welcomed fruit crop in the United States. In particular, growers in Florida consider dragon fruit as a potential alternative fruit crop to avocado and citrus, two economically important fruit crops heavily impacted and compromised by laurel wilt and huanglongbing, respectively. In south Florida, production of dragon fruit has been steadily increasing since the 2000s, and according to a recent estimate, the total acreage has exceeded 720 acres.

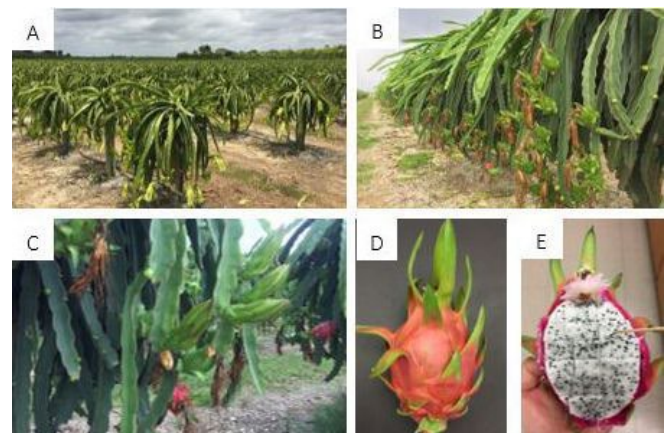


Figure 1. Reproductive growth of dragon fruit in a commercial grove in Miami-Dade County, Florida (A). After the flowers wilt, pollinated flowers start to develop into fruits (B). Often, flower buds and developing fruits at different stages can be seen simultaneously in the canopy (C). Depending on the cultivar, the skin of mature fruits has either red or yellow tones with green to red bracts (D) and the flesh can be white, pink, or red, with small black edible seeds (E).

Credit: Cheng-Fang Hong, UF/IFAS

Stem and Fruit Canker of Dragon Fruit

Dragon fruit has been a relatively low-maintenance crop, but several diseases have arisen with significant impact, likely due to increases in planting acreage and the consequent buildup of pathogen inoculum. Based on a recent survey, stem and fruit canker caused by the fungal pathogen *Neoscytalidium dimidiatum* is a prevailing disease on dragon fruit in south Florida. The pathogen has also been reported in Southeast Asia, the Middle East, North America, Ecuador, Puerto Rico (South America and Caribbean) and India, causing canker-like symptoms on cladodes (stems) and fruits. Symptoms on cladodes start with sunken chlorotic spots, which sometimes have a tiny orange center (Figure 2A). Over time, the spots turn into larger, convex, orange to reddish-brown spots, which often coalesce to form large brown lesions. In many cases, the

reddish-brown spots are surrounded by yellow halos and/or dark brown, water-soaked tissue (Figure 2B-C). The pathogen produces small black fruiting bodies (pycnidia) embedded in pale yellow to gray necrotic tissues (Figure 2C). These fruiting bodies harbor massive amounts of spores (conidia) that may be dispersed onto young, healthy tissues and start new infections. The lesions eventually dry out, perforate the cladodes, and form "shot-hole" symptoms (Figure 2D).



Figure 2. Symptoms caused by *Neoscytalidium dimidiatum* on dragon fruit cladodes. The whitish yellow spots (A) turn orange to brown over time, which can coalesce to form larger spots or lesions. The spots or lesions are sometimes surrounded by yellow halos, which turn into necrotic water-soaked lesions (B). The pathogen then produces black fruiting bodies (pycnidia, arrowed) on the lesions (C), which can initiate new infections on young, healthy cladodes a
Credit: Cheng-Fang Hong, UF/IFAS

Once the spores are splashed by external forces, such as overhead irrigation water or windblown rain, they may land on, germinate and infect susceptible young cladodes, flower calyx, and developing fruits. Initial symptoms of *N. dimidiatum* infection on the calyx and developing fruits are similar to the initial symptoms seen on cladodes. Whitish-yellow sunken spots often appear scattered or as clusters on one side of the fruit (Figure 3A), particularly when the fruits are under or adjacent to the diseased cladodes. In many cases, the small, yellowish spots coalesce and form larger brown, dry lesions, which sometimes crack the fruit's peel (Figure 3B–D). In south Florida, *Neoscytalidium* infection is limited to the fruit's peel and usually does not invade the pulp. Diseased fruits seem to be more prone to the infection of other postharvest pathogens such as *Colletotrichum*. In other dragon fruit production areas, such as Israel and China, *N. dimidiatum* has been documented causing interior black rot of the fruit, potentially via flower tube infection. Because the grove can sustain the infection during the vegetative growing season, maintaining low levels of the pathogen inoculum is imperative to minimize the risk of stem and fruit damage.

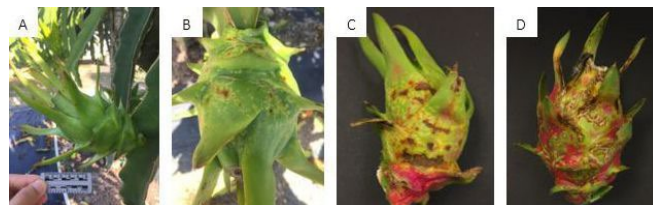


Figure 3. Symptoms of fruit canker caused by *Neoscytalidium dimidiatum*. The whitish-yellow spots (A, B) turn brown over time, which then coalesce to form larger lesions (B, C). The brown, dry lesions sometimes crack the peel (D), creating potential infection sites for other postharvest pathogens.
Credit: Cheng-Fang Hong, UF/IFAS

Epidemic of Stem and Fruit Canker

In recent studies, *N. dimidiatum* was reported to germinate and grow faster when the ambient temperature rises from 68°F to 95°F (20°C to 35°C) (Figure 4). Based on a model developed by a research team at the University of Florida, 50% of *N. dimidiatum* spores may germinate within 24 hours when the temperature is above 72°F (22°C), suggesting that the disease pressure could be high if the spores of the pathogen (inoculum source) are abundant and the temperature is rising. Hence, growers are recommended to consider implementing major pruning and sanitation programs after harvest and maintaining cleanliness in the groves before the following production season. The goals of the sanitation program are 1) to keep the pathogen population at a low level by removing and destroying diseased cladodes, and 2) to increase airflow and fungicide penetration within the canopy. It is crucial to maintain the groves as disease-free as possible during the winter and early spring, when young, susceptible cladodes are emerging and developing and the weather is cool and dry in south Florida. Otherwise, managing the disease becomes challenging as the temperature rises in late spring and remains high during the rainy season (May to October).

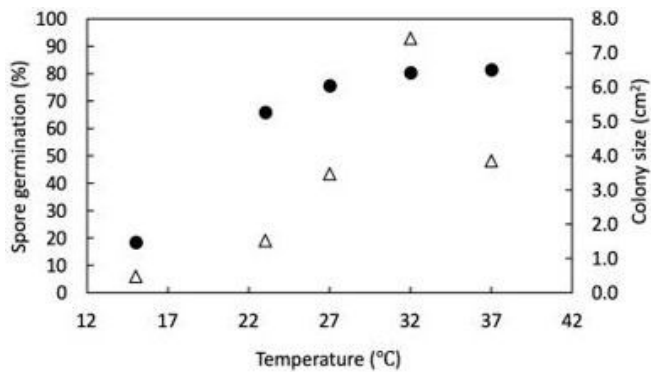


Figure 4. Effect of temperature on the percentage of spore germination (closed circle) and colony size (open triangle) of *Neoscytalidium dimidiatum* after incubating at different temperatures for 24 hours. The higher the temperature, the more spores germinate in 24 hours. Once germinated, the pathogen grows faster between 27°C and 37°C, compared with that between 15°C and 23°C. The optimum temperature for pathogen growth is around 32°C.

Management of Stem and Fruit Canker

Suggested preventative programs, including scouting, pruning, and sanitation during winter and spring are based on a recent study showing that the percentage of infected fruits in a grove was positively associated with disease incidence and severity on cladodes in the early season. If stem canker disease is high during the vegetative growth of the crop, a high percentage of fruit infection may be expected. In addition, *N. dimidiatum* kills plant tissues as it expands, causing irreversible spots or lesions on fruits after infection. The aesthetic damage on fruit peels could lead to 60%–80% or more loss of the market value, based on local growers' experience.

Fullerton et al. (2018) reported that, in Vietnam, it was possible to restore a highly diseased and unproductive dragon fruit grove to a healthy and high-yielding one, as long as a combination of strict field sanitation and effective fungicide programs was implemented. In south Florida, however, trying to restore a grove from a highly diseased and unproductive condition may be very costly, considering the extended period of the hot and humid season, the cost of labor, and limited fungicides registered for dragon fruit disease management.

Only a few conventional fungicides and some organic fungicides are currently registered for dragon fruit disease management (Table 1). The fungicides with the active ingredients azoxystrobin (FRAC group 11) and cyprodinil + fludioxonil (FRAC group 9 + FRAC group 12) are limited to a total of four applications per year, making it impossible to develop a disease management program that

effectively protects dragon fruit throughout the season. Although the date for the start of different phenological stages of dragon fruit may vary slightly from year to year, the main idea of managing stem and fruit canker is the same: conducting sanitation (i.e., pruning and removing infected plant parts) during the cool and dry seasons, maintaining clean groves, and rotating fungicides among different FRAC groups during reproductive growth to better protect the flowers and fruits. More fungicide options are desperately needed, not only as additional tools for disease management, but also to prevent the development of fungicide-resistant pathogen populations by rotating the fungicides of different FRAC groups. This work is currently underway in collaboration with the USDA Minor Use Pesticide Program (Inter-regional Project No. 4). In short, a key component for managing dragon fruit diseases will be reducing the disease pressure by sanitation and applying fungicides during the appropriate time, which is always recommended for sustaining dragon fruit production in south Florida.

Concluding Remarks

In south Florida, stem and fruit canker, caused by the fungus *N. dimidiatum*, is a major disease of dragon fruit, causing up to 60%–80% losses of sale value due to the symptoms on the fruit. Management of this disease is challenging because of the prevailing/year-round warm, moist climate, the cost of labor, limited information on the pathogen, and the low numbers of registered chemical management options. Ongoing research is focusing on further understanding the biology of the pathogen, epidemiology of the disease, optimization of fungicide application, and efficacy evaluation of new chemical options for future registration on dragon fruit. Recommendations for management will be updated accordingly as further information is developed.

References

- CDMS. 2019. "Crop Data Management Systems." Crop Data Management Systems, Inc. Las Vegas, Nevada. <https://www.telus.com/agcg/en-us/agriculture/agriculture-api>
- Crane, J. H. 2018. "Tropical Fruit Production in Florida – Trials, Tribulations and Opportunities." *Proc. Fla. State Hort. Soc.* 131:ix-xii. <https://journals.flvc.org/fshs/article/view/114701/110028>
- Crane, J. H., and C. F. Balerdi. 2006. *Pitaya Growing in the Florida Home Landscape*. HS1068/HS303, 11/2005. *EDIS* 2006 (21). <https://doi.org/10.32473/edis-hs303-2005>.

- Espinoza-Lozano, L., Sumba, M., Calero, A., Jimenez, M. I., & Quito-Avila, D. 2022. First Report of *Neoscytalidium dimidiatum* Causing Stem Canker on Yellow Dragon Fruit (*Hylocereus megalantus*) in Ecuador. *Plant Dis* (ja).
<https://doi.org/10.1094/PDIS-06-22-1403-PDN>
- Evans, E. A., J. Huntley, J. H. Crane, and A. F. Wysocki. 2010. 2010 Cost Estimates of Establishing and Producing Pitaya (Dragon Fruit) in South Florida. FE888/FE888, 12/2010". *EDIS* 2011 (1).
<https://doi.org/10.32473/edis-fe888-2010>
- Ezra, D., O. Liarzi, T. Gat, M. Hershcovich, and M. Dudai. 2013. First Report of Internal Black Rot Caused by *Neoscytalidium dimidiatum* on *Hylocereus undatus* (Pitahaya) Fruit in Israel. *Plant Dis*. 97: 1513.
<https://doi.org/10.1094/PDIS-05-13-0535-PDN>
- Fullerton, R. A., P. A. Sutherland, R. S. Rebstock, T. H. Nguyen, N. A. T. Nguyen, T. L. Dang, T. K. T. Ngo, and V. H. Nguyen. 2018. The Life Cycle of Dragon Fruit Canker Caused by *Neoscytalidium dimidiatum* and Implications for Control. In *Proceedings of Dragon Fruit Regional Network Initiation Workshop*. 71–80. Taipei: FFTC.
http://www.ffc.agnet.org/upload/files/activities/20180713134846/Paper_Dr_Bob_Fullerton.pdf
- Hong, C. F., R. Gazis, J. H. Crane, and S. Zhang. 2019. Prevalence and Epidemics of *Neoscytalidium* Stem and Fruit Canker on Pitahaya (*Hylocereus* spp.) in South Florida. *Plant Dis*.
<https://doi.org/10.1094/PDIS-10-19-2158-RE>.
- Ni, H.-F., C.-W. Huang, S.-L. Hsu, S.-Y. Lai, and H.-R. Yang. 2013. Pathogen Characterization and Fungicide Screening of Stem Canker of Pitaya. *J. Taiwan Agricul. Res*. 62: 225–234.
<https://www.tari.gov.tw/english/form/index-1.asp?Parser=20,15,101,82,,,3680,225,,,18>
- Salunkhe, V. N., Bhagat, Y. S., Chavan, S. B., Lonkar, S. G., & Kakade, V. D. 2022. First Report of *Neoscytalidium dimidiatum* Causing Stem Canker of Dragon fruit (*Hylocereus* spp.) in India. *Plant Dis*. (ja).
<https://doi.org/10.1094/PDIS-04-22-0909-PDN>
- Serrato-Diaz, L. M., & Goenaga, R. 2021. First report of *Neoscytalidium dimidiatum* causing stem canker on dragon fruit (*Hylocereus* spp.) in Puerto Rico. *Plant Dis*. 105(9), 2728.
<https://doi.org/10.1094/PDIS-10-20-2265-PDN>

Table 1. Fungicides and alternative chemical products registered for managing dragon fruit diseases in Florida.

Active ingredient ^x	FRAC group	Commercial product	Preharvest interval (Day)	Total applications per year
Azoxystrobin	11	Abound®, Acadia 2 SC, AFrame, AzoxyStar, Azoxyzone™, AZteroid® FC, AZteroid® FC 3.3, Mazolin™, Satori®, Tetraban™, Trevo, Willowood Azoxy 2SC	0	4
Cyprodinil + Fludioxonil	9 + 12	Switch® 62.5WG	0	4
Copper sulfate pentahydrate *	M01	Magna-Bon C2005	0	NS ^z
Extract of <i>Swinglea glutinosa</i> ^y	- ^y	EcoSwing™ Botanical Fungicide	0	NS
Garlic oil *	-	Brandt® Organics Aleo™, Veg'lys	-	-
Hydrogen dioxide & Peroxyacetic Acid	-	OxiDate® 2.0, SaniDate® 12.0, SaniDate® 5.0, SporeQuell™ 15%, StorOx® 2.0, TerraClean® 5.0	-	NS
<i>Streptomyces lydicus</i> WYEC 108 *	-	Actinovate® AG, Actinovate® STP	-	NS

^x Always read and follow label instructions. There is no guarantee this is an exhaustive listing of all products legally available for dragon fruit.

^y Not available.

^z None stated.

* Organic production.

¹ This document is PP355, one of a series of the Department of Plant Pathology, UF/IFAS Extension. Original publication date December 2019. Revised April 2023. Visit the Ask IFAS website at <https://ask.ifas.ufl.edu/> for the currently supported version of this publication.

² Cheng-Fang Hong, post-doctoral associate, plant pathology, UF/IFAS Tropical Research and Education Center; Shouan Zhang, professor, vegetable plant pathology, Department of Plant Pathology, UF/IFAS Tropical Research and Education Center; Pamela Suellen Salvador Dutra, postdoctoral associate, Department of Plant Pathology, UF/IFAS Tropical Research and Education Center; Romina Gazis, associate professor, Department of Plant Pathology, and director, Plant Diagnostic Clinic, UF/IFAS Tropical Research and Education Center; Jonathan H. Crane, professor emeritus, tropical fruit crop specialist, Department of Horticultural Sciences, UF/IFAS Tropical Research and Education Center; Jeff Wasielewski, Extension agent II, commercial tropical fruit crops, UF/IFAS Extension Miami-Dade County; UF/IFAS Extension, Gainesville, FL 32611.

The Institute of Food and Agricultural Sciences (IFAS) is an Equal Opportunity Institution authorized to provide research, educational information, and other services only to individuals and institutions that operate in compliance with applicable federal and state non-discrimination laws and policies. For more information on obtaining other UF/IFAS Extension publications, contact your county's UF/IFAS Extension office. U.S. Department of Agriculture, UF/IFAS Extension Service, University of Florida, IFAS, Florida A&M University Cooperative Extension Program, and Boards of County Commissioners Cooperating. Andra Johnson, Dean for UF/IFAS Extension.